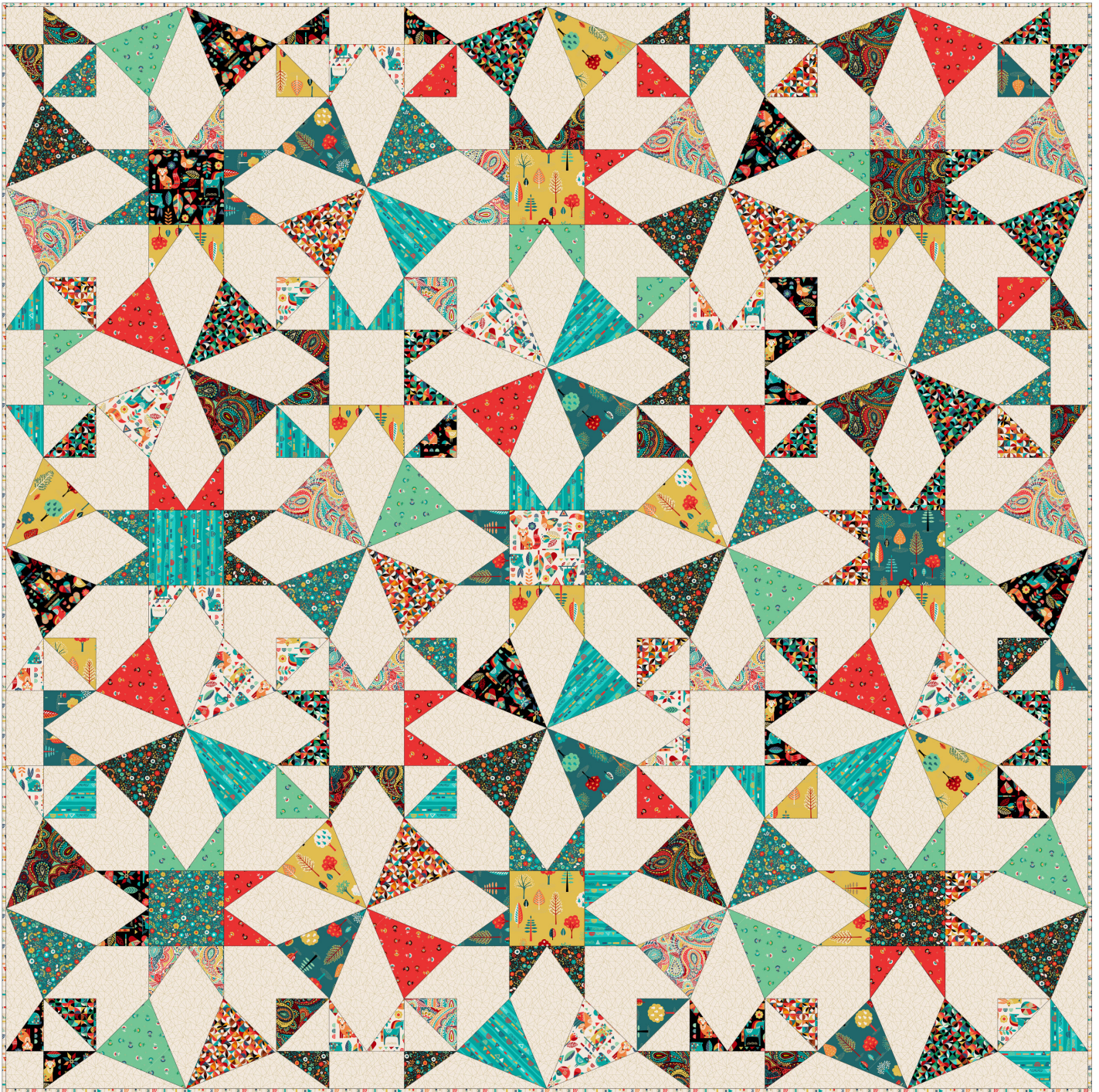


# Folk Friends Quilt

Designed by Lynne Goldsworthy of [lilysquilts.blogspot.com](http://lilysquilts.blogspot.com)  
72" square (1.8m x 1.8m)



# Folk Friends Quilt

72" square (1.8m x 1.8m)

## Fabric Requirements

SKU	Amount
2300 Q / X, 2301 Q / X, 2302 T / X, 2303 Q / X, 2304 R / T, 2305 T / Y, 2306 T	FQ
2300Q (backing)	4.25m / 4 ½ yds
2306Q (binding)	50cms / ½ yard
2307Q (BKG)	3.25 m / 3 ½ yds
Wadding 279 Cotton Mix 80-20 from <a href="http://www.vlieseline.com/en">http://www.vlieseline.com/en</a>	2m sq / 80" sq
Basting Spray - Odif 505 from <a href="https://www.odifusa.com">https://www.odifusa.com</a>	
Thread: Aurifil 50wt for piecing and 40wt for quilting from <a href="http://www.aurifil.com">http://www.aurifil.com</a>	
Templates - One A / B template sheet and thirteen HST template sheets	

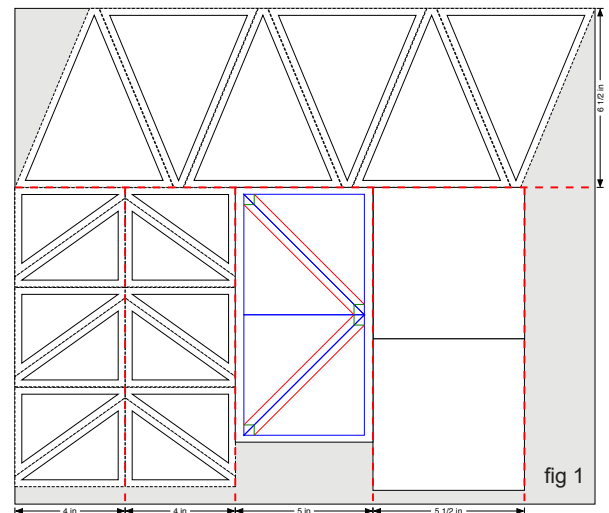
## Notes:

- Make sure to visit <http://www.makoweruk.com/projects/> to ensure you are working from the most up-to-date version of the pattern
- Read the pattern in full before starting
- Make sure to print the templates at "100%" or "no scaling" and double check the dimension guide line before starting
- ¼" seams are used throughout except where stated otherwise
- Press after each seam, pressing seams open or to one side as preferred
- WOF - width of fabric - a strip of fabric cut from selvedge to selvedge
- WOFQ - a strip of fabric cut from selvedge to selvedge on a FQ
- LOF- length of fabric – a strip of fabric cut parallel to the selvages from yardage or within a FQ
- BKG – background
- HSTs – half square triangles

## Cutting the fabrics

1. Cut each of the FQs as follows (see fig 1):

- Cut a 6 ½" WOFQ strip and cut into five or six B2 templates (72 required in total)
- From the remainder cut two 4", one 5" and one (optional\*) 5 ½" LOF strip
- Cut three pairs of A1 and three pairs of A3 triangles from each of the 4" strips
- Cut one 5" x 9 ¼" rectangle from the 5" strip
- From the remainder of the FQs, cut a total of nine\* 5 ½" squares for the print centres of the stars.



2. Cut the background (BKG) fabric into

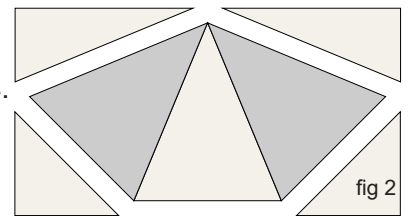
- One 5 ½" WOF strip cut into four 5 ½" squares, three 3" x 5 ½" rectangles and one 5" x 9 ¼" rectangle
- One 3" WOF strip cut into four 3" squares and five 3" x 5 ½" rectangles
- Four 4" WOF strips cut into thirty six 4" squares
- Four 4 ½" WOF strips cut into thirty six 4 ½" squares each cut in half on the diagonal
- Five 6 ½" WOF strips cut into twelve B2 templates per strip and one B1 template at each end.
- One 6 ½" WOF strip cut into one pair of B1 templates and six pairs of B3 templates
- Three 5" WOF strips cut into twelve 5" x 9 ¼" rectangles
- Five 4" WOF strips. From each strip cut twelve A2 templates and one A1 template at each end.
- One 4" WOF strip cut into one pair of A1 templates and six pairs of A3 templates.

3. Cut the backing fabric into two equal lengths and the binding fabric into seven 2 ½" WOF strips.

## Making the quilt top – follow fabric placement in the main layout diagram or randomly scatter the fabric designs across the quilt as desired

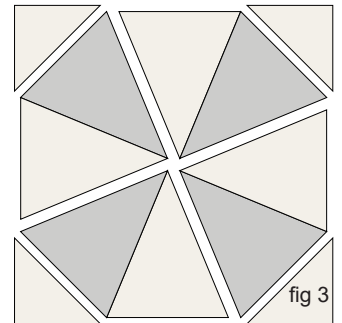
1. Sew twelve print A1 triangles to twelve BKG A1 triangles and twelve of the same print A3 triangles to twelve BKG A3 triangles. These pieces will form part of the half and quarter star blocks around the edge of the quilt (in rows 1 and 7 and columns A and G in the main quilt diagram).

2. Sew sixty print A1 triangles to one side of a BKG A2 triangle and the same print A3 triangle to the opposite side of the BKG A2 triangle. These pieces will be used on the blocks listed above as well as in all the star blocks.



3. Sew print B2 triangles to either side of a BKG B2 triangle. Sew BKG B1 and B3 triangles to this piece. Sew BKG 4 1/2" half square triangles to the ends of the two print wedges. See fig 2. Make twelve of these.

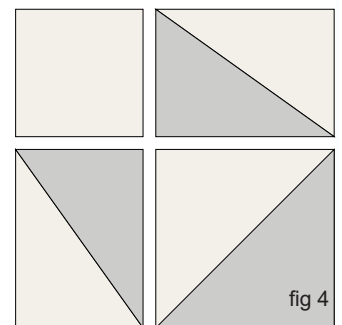
4. Sew print and BKG B2 triangles into pairs. Sew these pairs together. Sew those pairs together to make a complete kaleidoscope shape. Sew BKG 4 1/2" half square triangles to the ends of the print wedges (see fig 3). Make twelve of these.



5. For the corners of the quarter, half and four of the whole star blocks, you will make print / BKG half square triangle units (HSTs) (thirty-six total). These will be made in thirteen sets of four using the print and BKG 5" x 9 1/4" rectangles and the HST templates. Sixteen of the HST units will be discarded but a set is made from each print to add variety.

**NB: The fabric rectangles are 1/2" bigger than the templates so that they overhang the paper by 1/4" all around the dashed line – this is to make it easier to line up the fabrics to the paper template.**

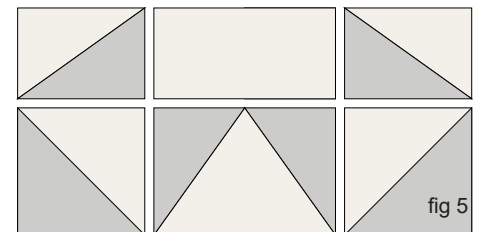
6. To make each set of HSTs, pin one print and one BKG rectangle to the back of one of the HST templates with the fabrics right sides together and the BKG fabric next to the paper.



7. Shorten your machine stitch to 1.5 and sew along all of the red lines. Cut the template and fabric along all the blue lines using a rotary cutter. Trim off the corners on each triangle along the green lines.

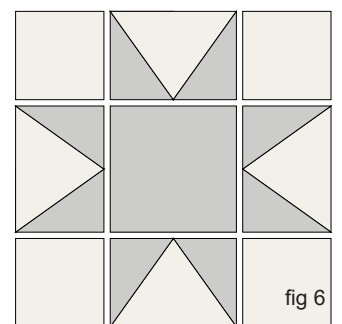
8. Press each HST unit open. Remove paper from the back of each HST unit. **NB: you will only need thirty-six of these.**

9. Assemble the four quarter star corner blocks as shown in fig 4, sewing into two rows and those two rows together. NB: the BKG square top left in this diagram is a 3" square.

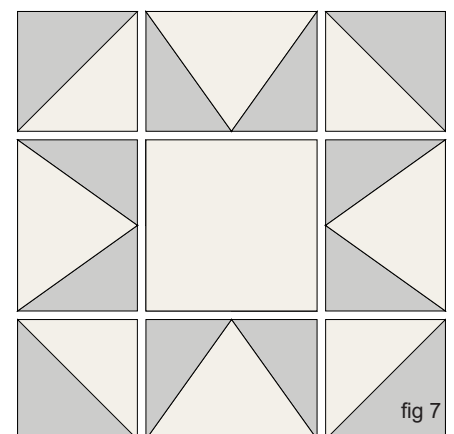


10. Assemble the eight half star edge blocks as shown in fig 5 sewing into two rows and those two rows together. NB: the BKG rectangle top middle in this diagram is a 3" x 5 1/2" rectangle.

11. Assemble the nine print centre star blocks as shown in fig 6 by sewing into three rows and sewing those three rows together. NB: the BKG squares in the corners are 4" squares.



12. Assemble the four BKG fabric centre star blocks as shown in fig 7 by sewing into three rows and sewing those three rows together. NB: the BKG square in the centre of this block is a 5 1/2" square.



13. Sew the blocks into seven rows of seven then sew those rows together to finish the quilt top following the layout in the main quilt diagram.

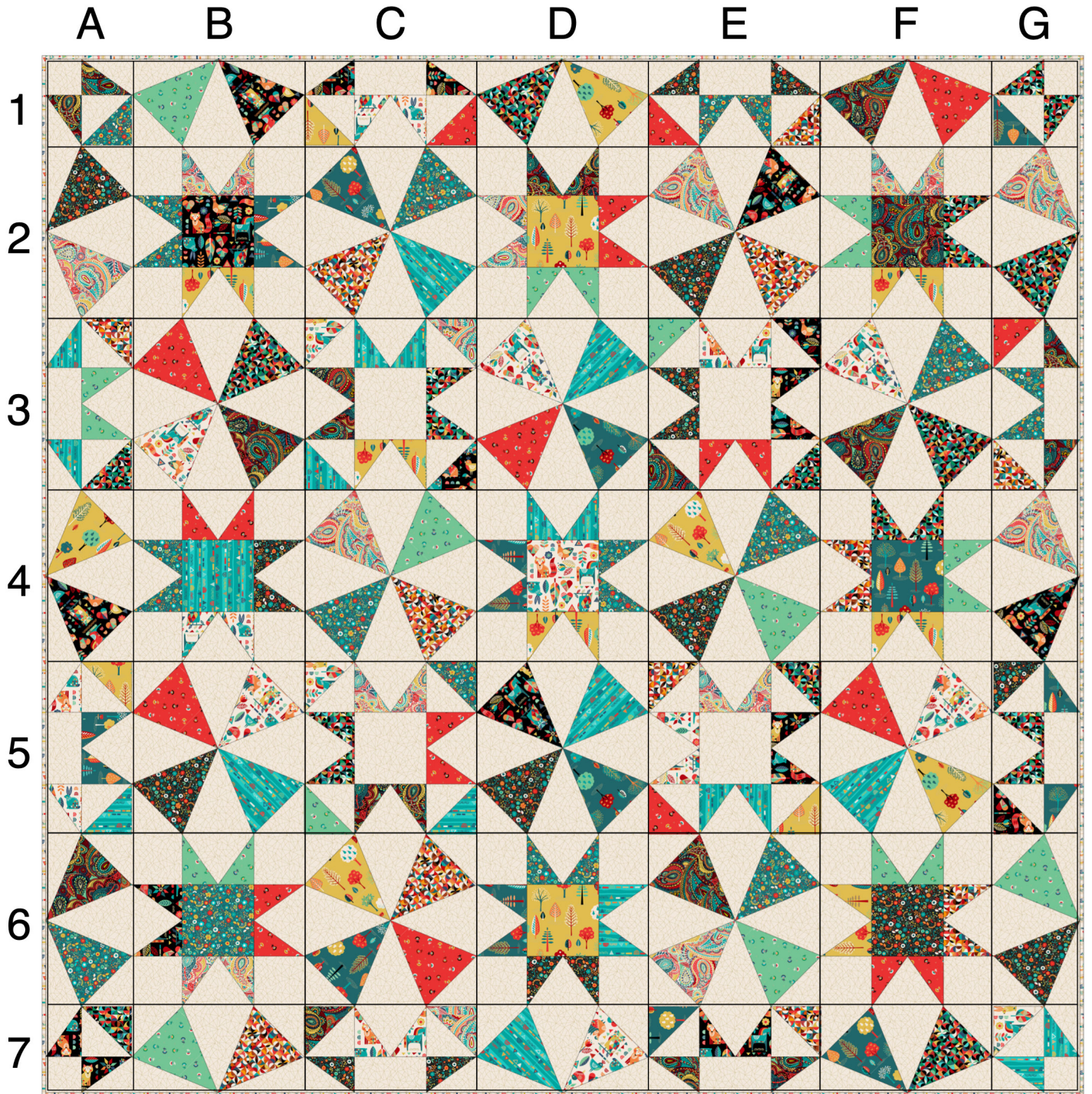
### Finishing the quilt

1. Sew the binding strips end to end using diagonal or straight seams as preferred and press wrong sides together along the length to make a double fold binding.

2. Sew the two pieces of backing fabric together. Make a quilt sandwich, basting together the back, the wadding and the top.

3. Quilt as desired then trim square, removing excess wadding and backing. We quilted an all over meander using a cream 40wt Aurifil thread on the front and back.

4. Bind, taking care to mitre the corners.



Templates must be printed at 100% or "no scaling". To ensure the templates are the correct size, measure the inch square to make sure it has printed at the correct size.

Template A2

Template A1

Template A3

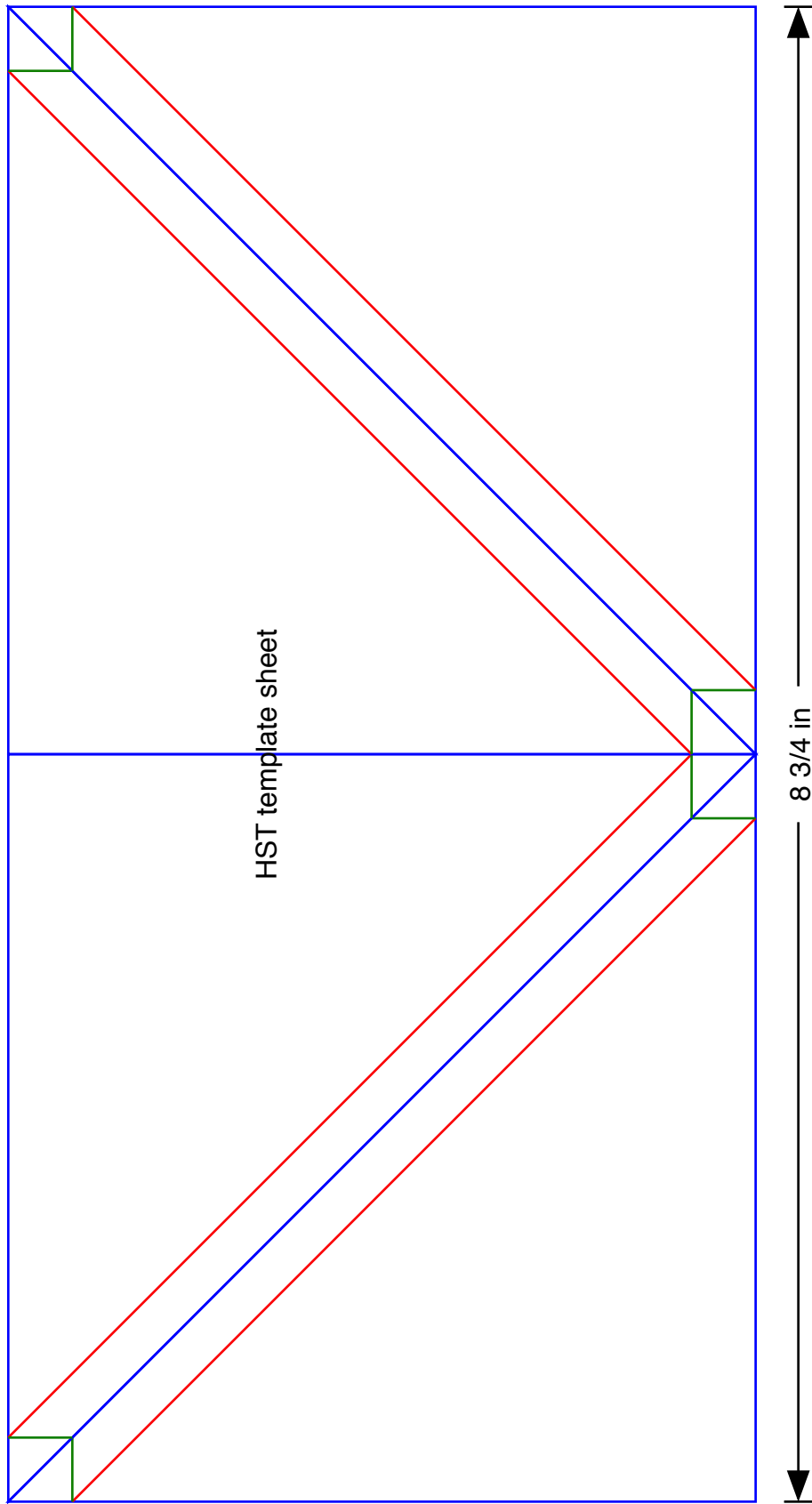
Template B1

Template B3

Template B2

1"

Templates must be printed at 100% or "no scaling". To ensure the templates are the correct size, measure the inch square to make sure it has printed at the correct size.



Folk Friends



2300/X Animals



2300/Q Animals



2301/X Mosaic



2304/R Sprig



2304/T Sprig



2301/Q Mosaic



2305/T Trees



2305/Y Trees



2306/T Scallop Stripe



2303/X Paisley



2303/Q Paisley



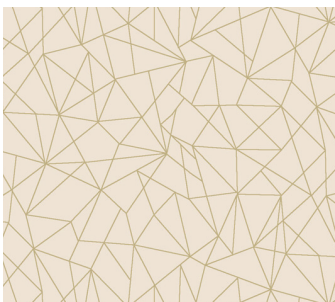
2306/Q Scallop Stripe



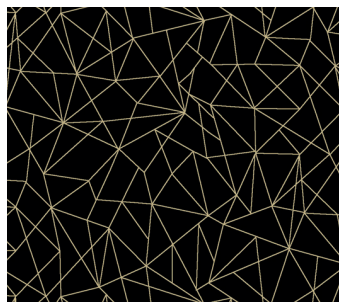
2302/X Floral



2302/T Floral



2307/Q Linework



2307/X Linework



2308/X Panel  
each panel 60 x 112cms (24" x 44")



2308/Q Panel  
each panel 60 x 112cms (24" x 44")